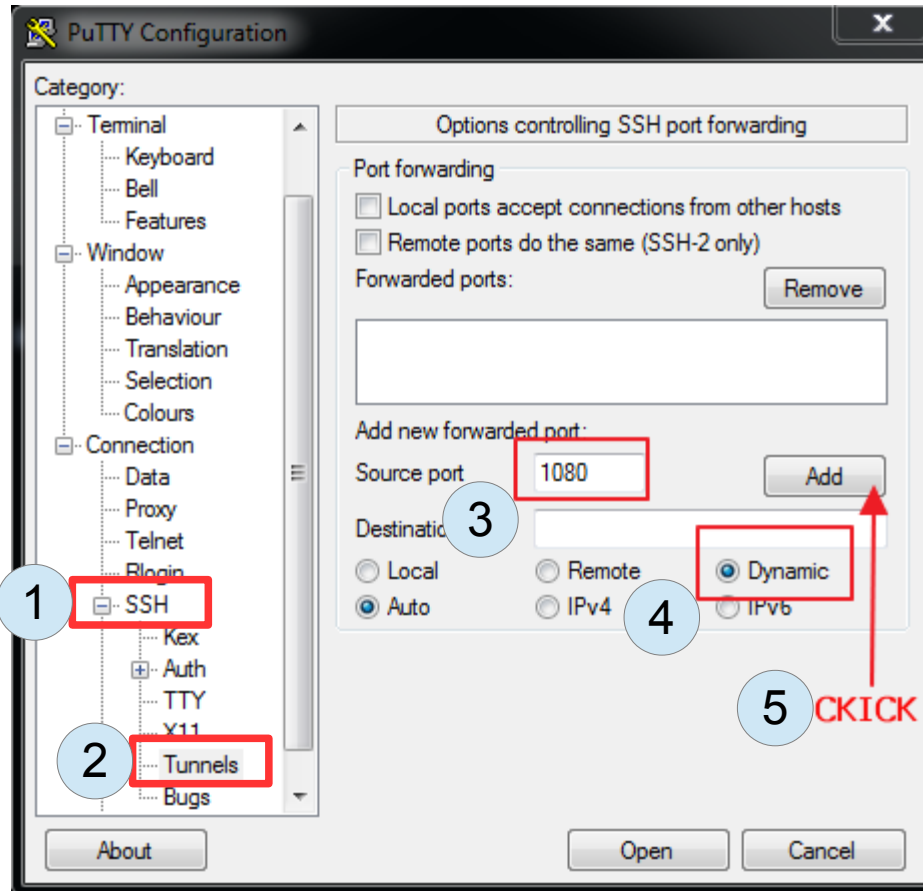


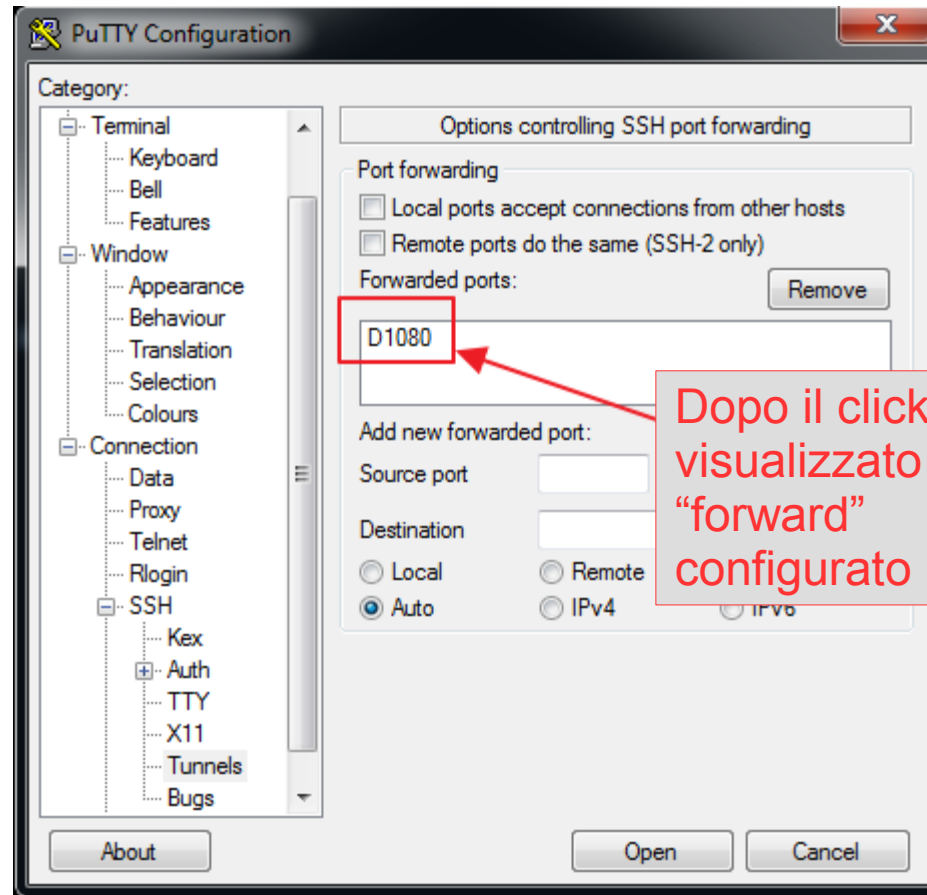


**CREIAMO UN TUNNEL SSH CON **PUTTY****  
**E ACCEDIAMO CON **FIREFOX****  
**SU TUTTI GLI IP DELLA **RETE DEL CLIENTE****

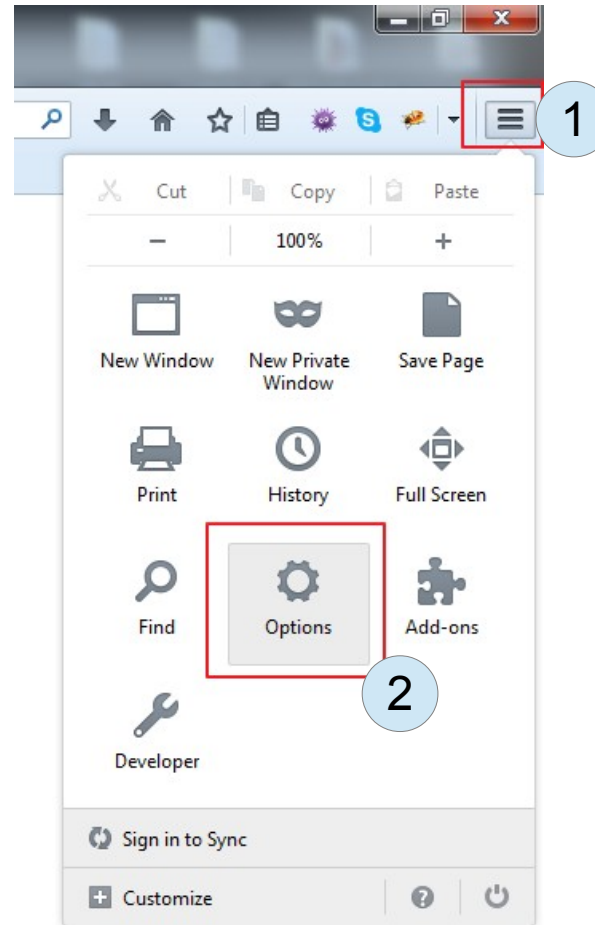
## Configuriamo Putty



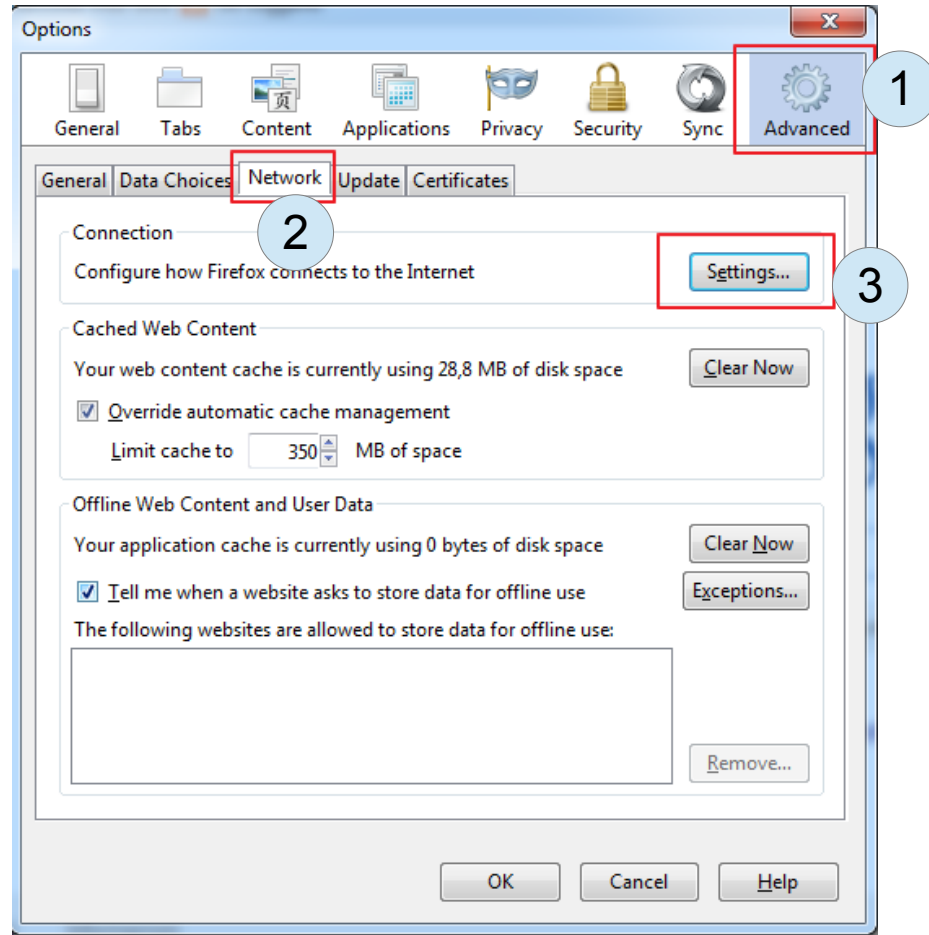
## Configuriamo Putty



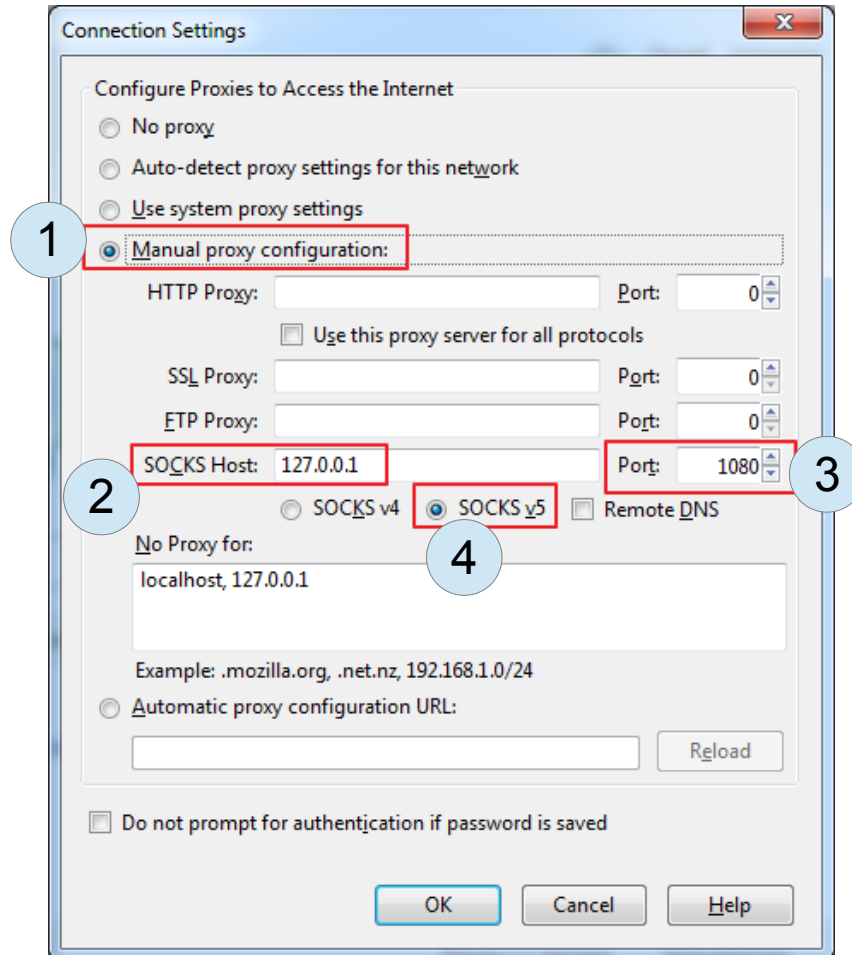
## Configuriamo Firefox



## Configuriamo Firefox



## Configuriamo Firefox



## A QUESTO PUNTO ...

con la connessione ssh di putty attiva  
possiamo con Firefox collegarci con gli ip  
privati della rete del Cliente e poter quindi accedere  
a FreePBX, ai telefoni, etc.

